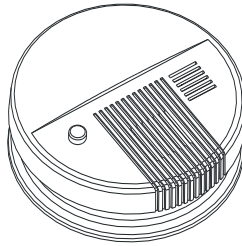


# Smoke Alarm Sensor HC-81

## Welcome to use HC-81 smoke alarm sensor!

They are photoelectric smoke alarm sensors, and they are generally more effective at detecting smoldering fires which has smoldered for hours before bursting into flame. Sources of these fires may include cigarettes burning in couches or bedding.



## TECHNICAL PARAMETER

Power: 9V/DC

Working Consumption: <10mA

Working temperature: -20°C~40°C

Static Consumption: < 8uA

Alarm sound: ≥ 85 db (3m)

## WHERE TO INSTALL SMOKE ALARM SENSOR

1. At first, you need to install them in your bedroom and route way, and should install at least one item in every bedroom.

2. Stairway is important for you to rush out when fires occur, so smoke detectors must be installed there as Diagram 1 shows.

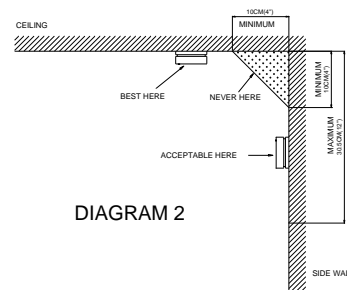
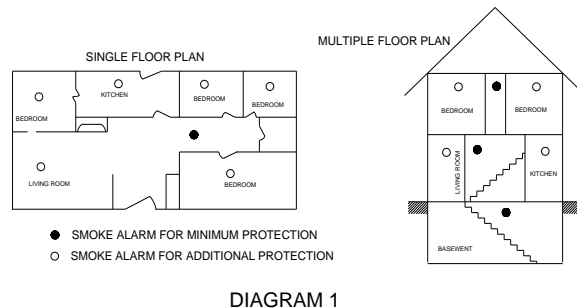
3. You at least require one smoke alarm on every floor, including finished attics and basements.

4. Install one alarm beside every electric facility.

5. Install smoke alarms in the middle of ceiling, because smog, heat and flashes are always through the roof of rooms.

6. If some reasons cause you can't install them in the middle of ceiling, you need to install them at least 10cm away from the wall.

7. If you like to install them on the wall, they should be installed 10-30.5cm away under

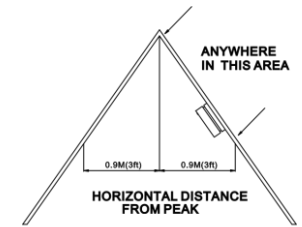


the ceiling as Diagram 2 shows.

8. You need to install more than one alarm when the length of your hall exceeds 9m.

9. In a triangle roof room, install the alarm 0.9m away from the top as Diagram 3 shows.

10. How to install smoke alarms in a removable house. The removable house is short of heat isolation, so you'd better install the alarm 10-30.5cm away from the ceiling.



For safety you also need install another one near your bedroom.

## WHERE NOT TO INSTALL SMOKE ALARM SENSOR

1. Where combustion particles are produced. Combustion particles form when something burns. Avoid installing in the areas including poorly ventilated kitchens, garages, and furnace rooms. Keep units at least 6m from the sources of combustion particles (furnace, water heater, space heater) if possible. Ventilate these areas as much as possible.

2. In air streams near kitchens. Air currents can draw cooking smoke into the sensing chamber of a smoke alarm near the kitchen.

3. In very damp or steamy areas, or near bathrooms with showers. Keep units at least 3m away from showers, saunas, dishwashers etc.

4. Where the temperatures are regularly below 40 F (4°C) or above 100F(38°C), including unheated buildings, outdoor rooms, porches, or unfinished attics or basements.

5. In very dusty, dirty or greasy areas. Don't install a smoke alarm directly over the stove or its range. Clean a laundry room unit frequently to keep it free of dust or lint.

6. Near fresh air vents, ceiling fans, or in very drafty areas. Wind can blow smoke away from the unit, preventing it from reaching the sensing chamber.

7. In insect infested areas. Insects can clog openings to the sensing chamber and cause unwanted alarms.

8. Less than 30mm away from fluorescent lights. Electrical "noise" can interfere with the sensor.

9. In "dead air" space, for example, in Diagram 2, near the corner less than 10cm.

10. If you have a smoking meeting room, don't install the alarm there for the unit will alarm when several persons smoke;

## HOW TO INSTALL THIS SMOKE ALARM SENSOR

1. Hold base firmly and push the hinge in then turn anti-clockwise, unload the base. If you don't have enough power to separate the base, you can do as diagram4 shows.
2. Hold the smoke alarm base against the ceiling (or wall) and make a mark at the center of each of the mounting slots with a pencil.
3. Place the unit where it won't get covered with dust when You drill the mounting holes.
4. Using a 6.5mm drill bit, drill a hole through each pencil mark into 35mm depth.
5. Insert the plastic screw anchors into the holes and tap them gently with a hammer. Tighten the 3\*30 screws into the screw anchors, then loosen them two turns. Refer diagram 5
6. Slide the smoke alarm base up to the screw heads to match with the narrow ends of the mounting slots, then tighten the screws completely.
7. If the battery is needed, unscrew the screws fixing the battery cover, and insert the 9v battery into the box, then close the battery cover and tighten the screws, Refer Diagram 6
8. Close the bottom cover and the alarm body, and then finish your installation.

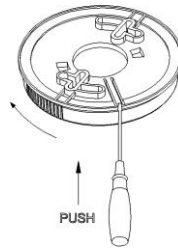


DIAGRAM 4

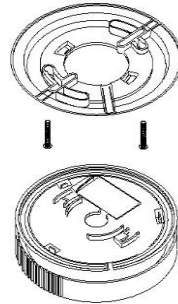


DIAGRAM 5

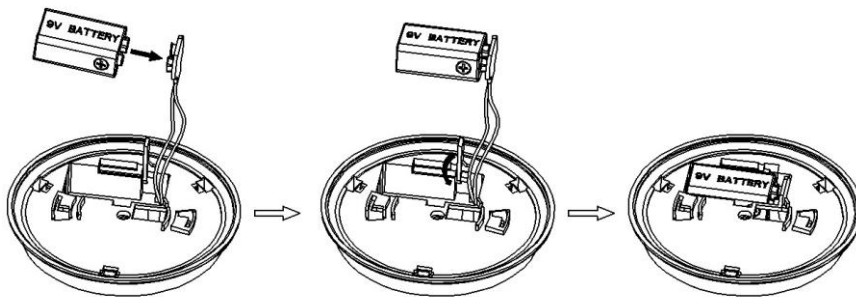


DIAGRAM 6

## TEST

1. It is important to test this unit weekly to make sure it is working properly. Don't open the alarms by yourself, return them to the seller if convenient, and don't use fire to test your alarms. But hold the test button on the cover of the unit until the alarm sounds. If it does not alarm, make sure that the unit is receiving power and test it again. If it still does not alarm, replace it immediately or check your battery.
2. The signal flashes once every 30 seconds and while it alarms the signal will flash once 0.5 per second.
3. If the alarm makes low "chirp" sounds about every 30 seconds, it tells you to exchange your battery.
4. Little smoke will not cause alarms, so misinformation occurs only when you blow smoke to the alarms directly or you forget to turn on your ventilated facility while you are cooking.
5. Sometimes when you smoke, the unit will alarm, so you can just blow air to it to stop alarming.

## HOW TO DO IN CASE OF FIRE

1. Call the Fire Department immediately after confirming the fire.
2. Don't worry, stay calm and follow your family escape plan. Get out of the house as quickly as possible, don't stop to get dressed or collect anything.
3. Feel doors before opening them to see if they are hot. If a door is cool, open it slowly. Don't open a hot door-use an alternate escape route
4. Cover your nose and mouth with a cloth (preferably wet). Take short, shallow breath.
5. Meet at your planned place outside your home, and count to ensure everybody go out safely.

## NOTICE

If the smoke alarm sensor is alarming without smoke, please check whether there is fluorescent light in the side, if so; please fix the product farther from the fluorescent light.