

# SOLO

Energy Saving Auto-Switch

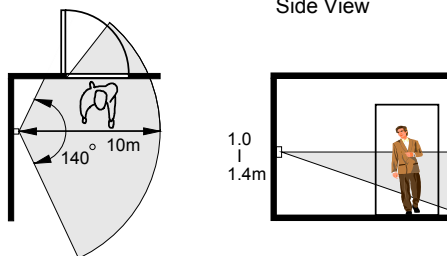
## LC-733/753

### INTRODUCTION

The LC-733/753 is an Energy Saving Auto-Switch designed to provide automatic switching control of the load by sensing the movement of human body. The LC-733/753 can be mounted with a single switch gang box with 83.5/60.0mm screw pitch. This product is able to switch the load up to 10 Amp with its dry contacts.

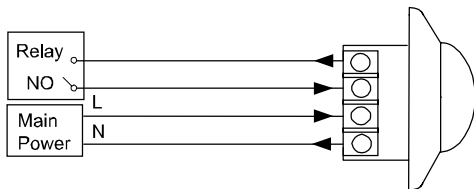
### DETECTION PATTERN

Top View 140°, 10 x 10m (at 25°C)  
Side View

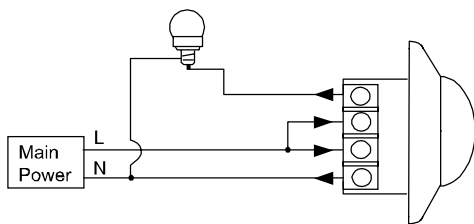


### WIRING DIAGRAM

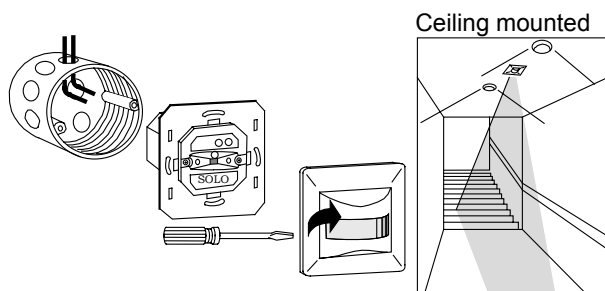
A. Relay contact output



B. Load control



### INSTALLATION



**Important !**

- Do NOT install SOLO behind door, curtain or any objects that may block the sensor.
- Do NOT place the front cover up side down. Note the "UP" mark inside the front cover.



## Installation Instructions

### TEST & ADJUSTMENTS

- Apply AC mains power and the light will be switched on about 90 seconds for sensor to warm up. Do NOT trigger the sensor during warm up period, as it will extend the time.
- Walk across within the detection area, the light should be switched on whenever the sensor detects the motion.
- Adjust the **TIME** and **LUX** controllers to set the desired light-on delay time and light switching threshold. Replace the front cover with the main unit after test completed.

*Note: The Auto-Switch will beep at 5 seconds before the end of delay time. The DEW can be disabled by pulling off the jumper head marked "DEW".*

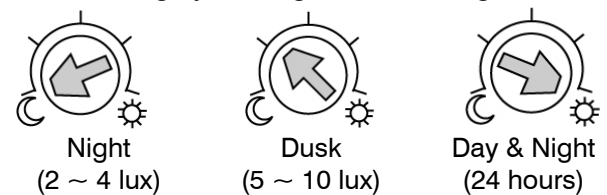
#### TIME

Light-on delay time can be set from approximately 10 seconds to 5 minutes. Further detection during delay time will reset the timer.



#### LUX

A built-in CDS photocell determines the operation of auto-switching by sensing the ambient light level.



### SPECIFICATIONS

Detection method	Passive Infrared (PIR)
Infrared sensor	Dual element, low noise
Power supply	110 or 230 VAC, 60/50 Hz
Detection range	140°, 10m at 25°C
Delay time	10 sec. ~ 5 min approx.
Delay end warning	5 seconds, can be disabled.
Switching capacity	10A resistive
Screw pitch	<b>LC-733:</b> 83.5 mm <b>LC-753:</b> 60.00 mm
Mounting height	1.0 ~ 1.4m (3.3 ~ 4.6 ft)
Temperature	-20° ~ +50°C (-4° ~ +122°F)
Dimensions	<b>LC-733:</b> 120 x 70 x 50 mm <b>LC-753:</b> 80 x 80 x 50 mm
Unit weight	120 gram